

MIAMIBEACH  
RISING  
ABOVE

# West Avenue

## Neighborhood Improvement Project Phase 2

Thursday, May 2, 2019





# MIAMIBEACH RISING ABOVE

## **Presented by:**

Elizabeth Wheaton  
City of Miami Beach  
Director, Environment and  
Sustainability Department

Sabrina Baglieri  
City of Miami Beach  
Senior Capital Projects Coordinator  
Office of Capital  
Improvement Projects

Michael Fischer  
RIC-MAN Construction Florida, Inc.  
Chief Operating Officer  
Design-Build Firm

# Presentation Outline

- 1 Resilience Accelerator Program Update
- 2 Why is this Project Needed/Overview
- 3 What to Expect During Construction
- 4 Segmented Construction
- 5 Where We Are Now
- 6 Questions/Comments

An aerial photograph of Miami Beach, Florida, showing a mix of modern high-rise apartment buildings and older, lower-rise structures. The city is situated along a large body of water, with a long pier extending into the water. In the background, several large gantry cranes are visible, suggesting a port or industrial area. The sky is clear and blue. A semi-transparent white box in the top left corner contains the text 'MIAMIBEACH RISING ABOVE' in green and blue letters.

MIAMIBEACH  
RISING  
ABOVE

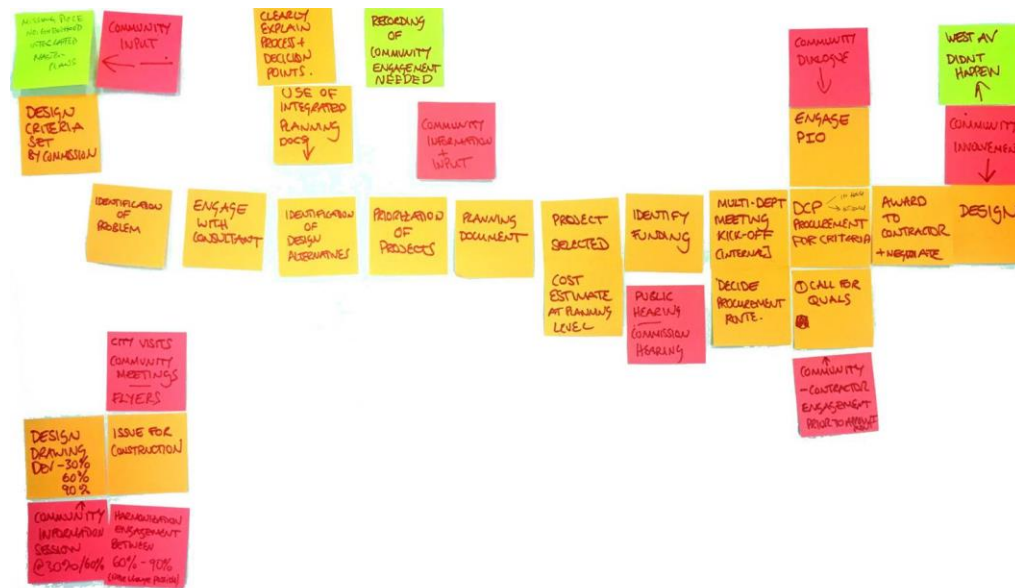
1

## Resilience Accelerator Program Update

# Resilience Accelerator Program

## Community Feedback

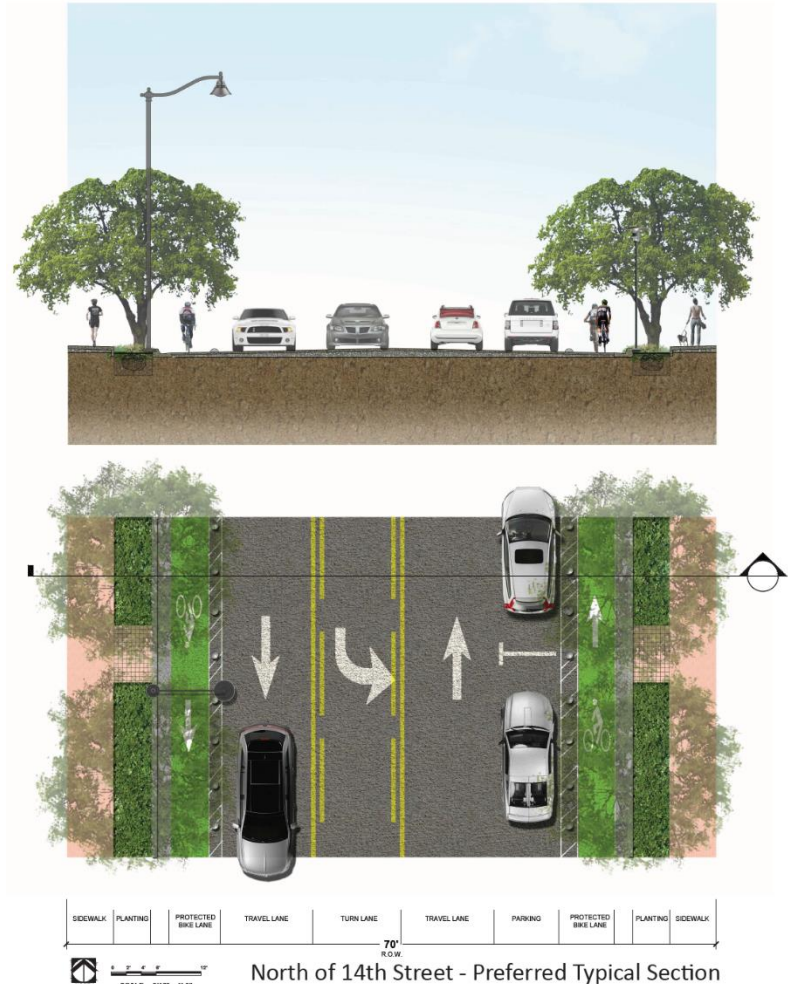
- Aging infrastructure
- Road raising/harmonization/drainage on private property
- Road width
- Bicycle facilities
- Walkability
  - Sidewalks
  - Tree Canopy
  - Landscaping
- Construction phasing



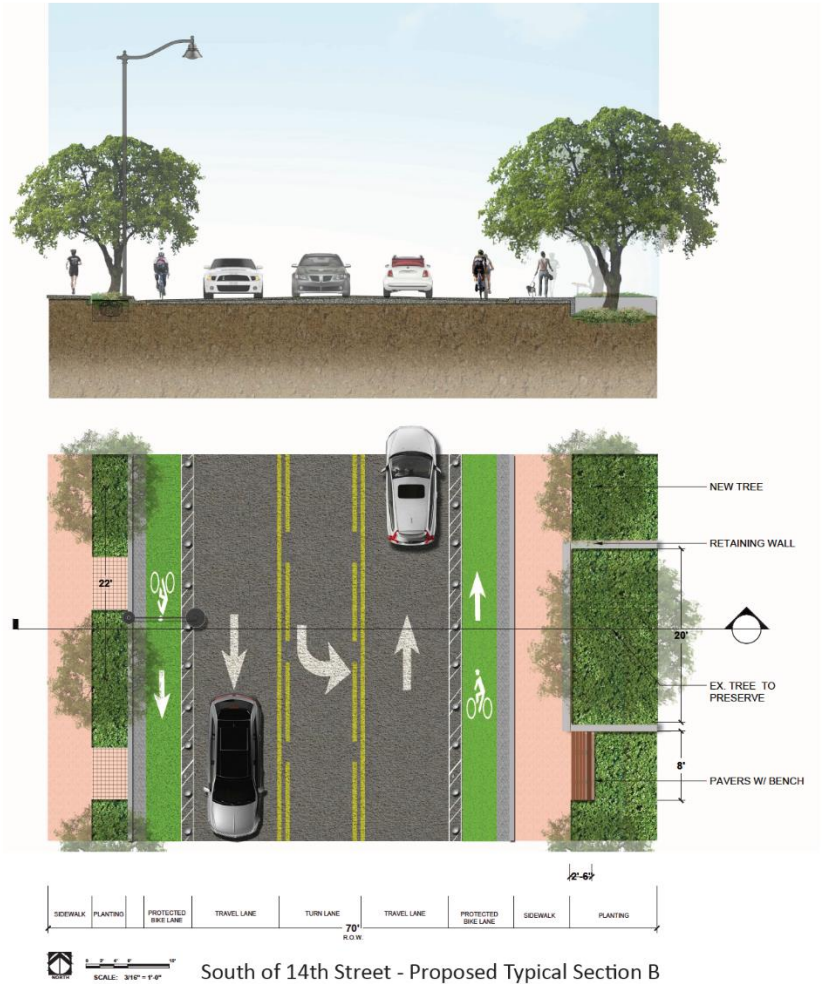
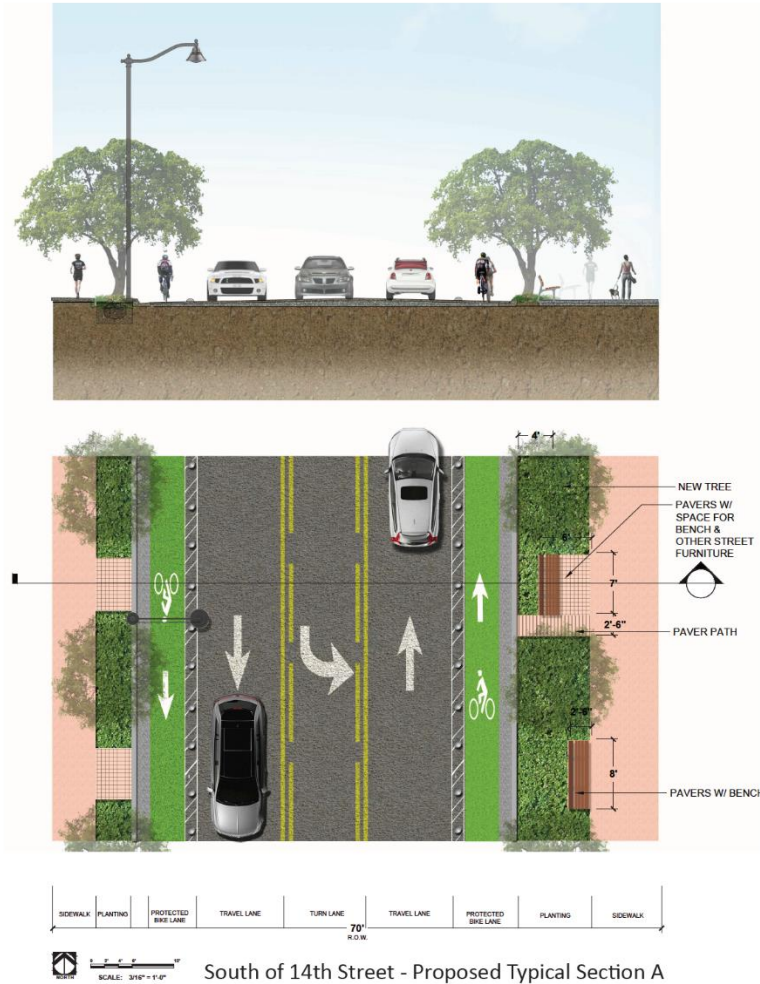
# Resilience Accelerator Program

## Improved Typical Section

- Prioritizing pedestrians, bicycle lanes
- Optimizing space
  - Parking
  - Use of green infrastructure
  - Aesthetics, street furniture
  - Ensure safety for first responders



# Resilience Accelerator Program



# Resilience Accelerator Program

## Final Recommendations

- Road elevation to 3.7' NAVD with harmonization
- Mobility
  - Two travel lanes with center turn lane
  - Two typical sections
- Enhanced street end design
  - Remove parking
  - Add tree canopy
- Street end pedestrian enhancements
- Storm protection: 10-year storm event
- Include sanitary sewer upgrades
- Permanent generators



### Two Typical Sections

- North of 14 Street
  - Protected bicycle lanes
  - Parking on east side
- South of 14 Street
  - Reduced parking
  - Protected bicycle lanes
  - Wider sidewalks
  - Green infrastructure



An aerial photograph of Miami Beach, Florida, showing a mix of modern high-rise apartment buildings and older, lower-rise structures. The city is situated along a large body of water, with a long pier extending into the water. In the background, several large gantry cranes are visible, suggesting a port or industrial area. The sky is clear and blue. A semi-transparent white box in the top left corner contains the text 'MIAMIBEACH RISING ABOVE' in green and blue letters.

MIAMIBEACH  
RISING  
ABOVE

2

## Why is this Project Needed/Overview

# Project Need/Overview

## Pre-Construction Conditions



# Project Overview

## Limits

- West Avenue between 8 Street and Lincoln Road, including side streets
- Bay Road between 14 Street and Collins Canal

## Project Schedule

- Plans currently being developed
- Construction sequencing is being finalized



# Project Overview

## Infrastructure Improvements

Installing new features including:

- Storm water drainage system, including a pump station at the western street end of Lincoln Road
- Fire hydrants
- Sanitary sewer main
- Water main, service lines
- New drainage model



*Drinking water critical needs*



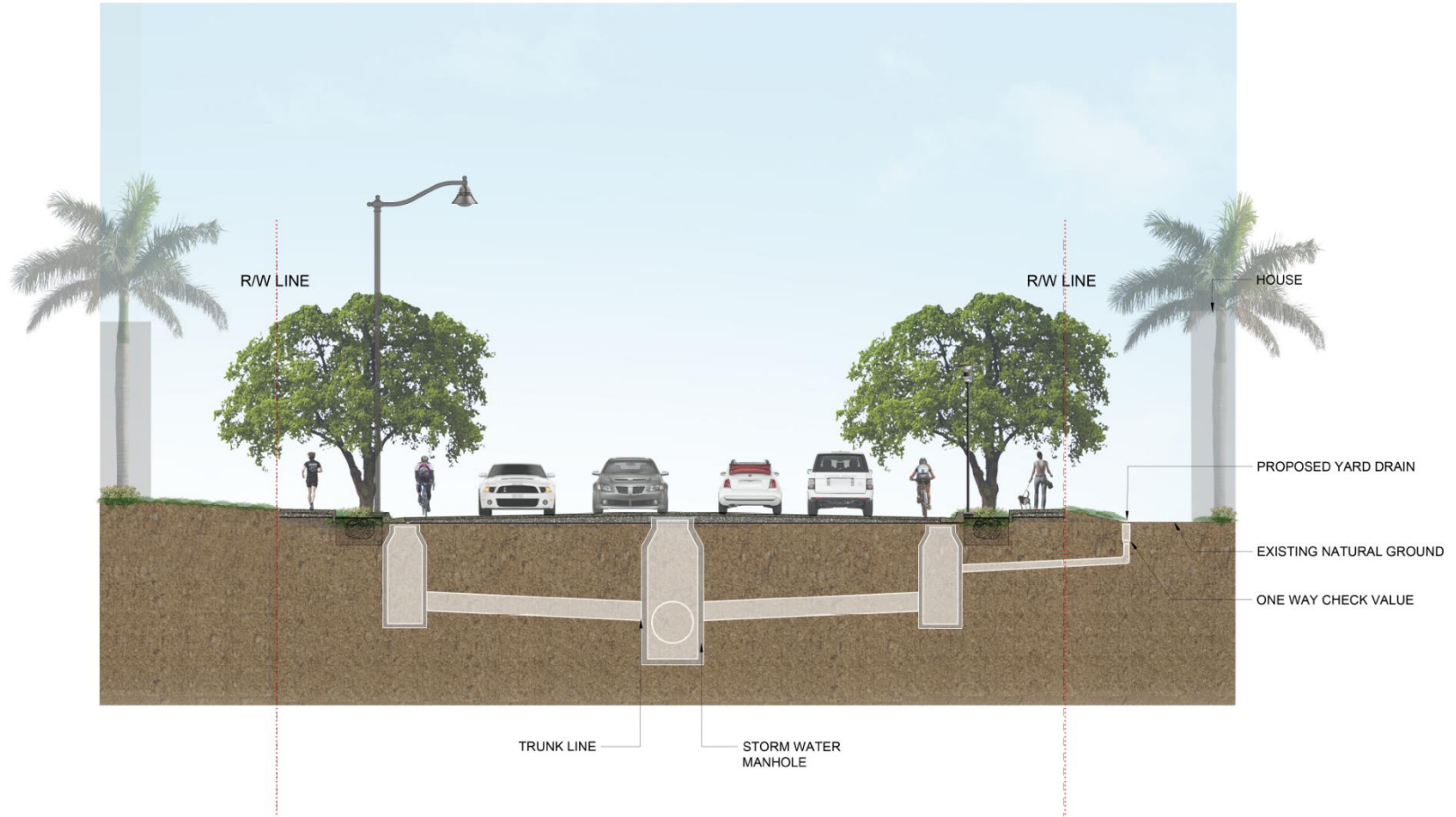
*Sewer critical needs*

# Project Overview

## Roadway Improvements

- Elevating the roadway
- Constructing new curb, gutter and sidewalks
- Installing new crosswalk pavers at various intersections
- Installing new signage and pavement markings
- Installing new protected bicycle lanes along West Avenue
- Installing new street and pedestrian lighting and traffic signals
- Resurfacing Alton Court between Lincoln Road and 16 Street
- Matching the new roadway elevation to existing driveways (Harmonization)
- Constructing a section of the Baywalk at Lincoln Road street end
- Installing new landscaping
- Enhancing street ends with pavers and additional landscape
  - Lincoln Road
  - Lincoln Court
  - Bay Road
  - Lincoln Terrace
  - 16 Street
  - 14 Street
  - 10 Street

# Typical Infrastructure Layout

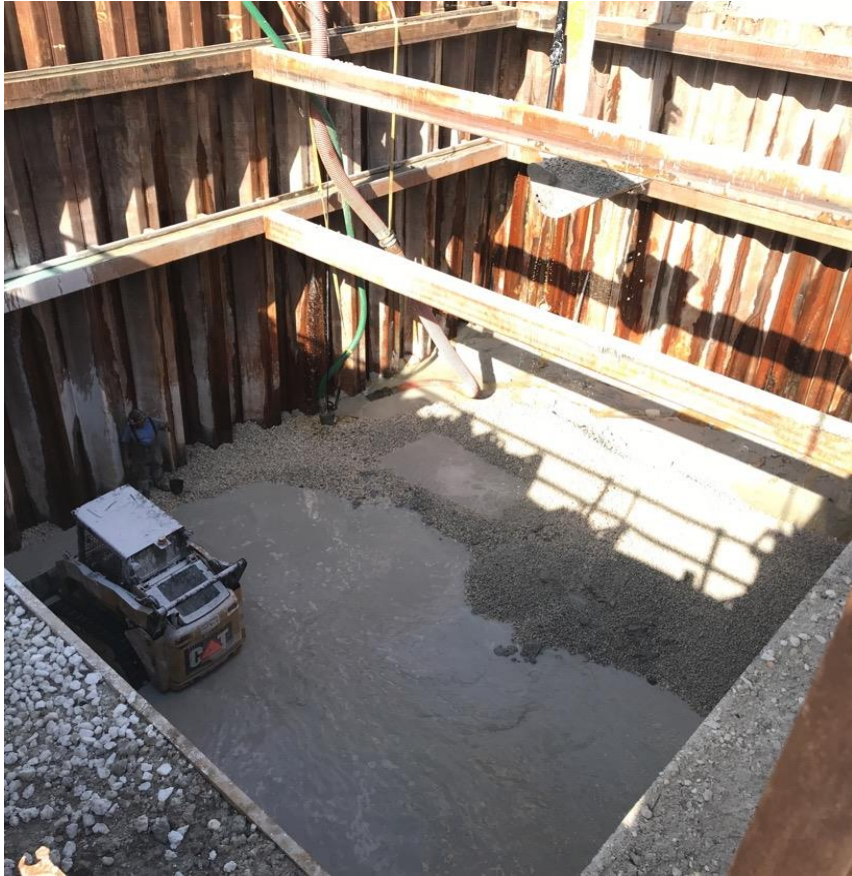


# MIAMIBEACH RISING ABOVE



## 3 What to Expect During Construction

# What to Expect...





# What to Expect...



An aerial photograph of a construction site in Miami Beach, Florida. The image shows several large, multi-story buildings under construction, with some concrete structures and others with glass facades. The site is situated along a waterfront, with a large body of water and a bridge visible in the background. The sky is clear and blue. The text 'MIAMIBEACH RISING ABOVE' is overlaid on the top left of the image.

MIAMIBEACH  
RISING  
ABOVE

**4** Segmented Construction

# Segmented Construction

## How Does it Work?

- Divides overall project into smaller work zones
- Design-build firm works in one designated area at a time to complete as much work as possible before moving onto next segment
  - One segment north of 14 Street
  - One segment south of 14 Street
- Only final layer of asphalt will remain pending in a section
  - Will be placed all at once toward end of project
- Engineer of Record (EOR) and team members will meet with representatives from each individual property
  - To discuss harmonization
  - Develop plans
  - Meetings being scheduled based on segmented construction phasing

# MIAMI BEACH RISING ABOVE

## North Project

Estimated  
timeframe:  
December  
2019  
through  
November  
2022



# South Project

Estimated  
timeframe:  
December  
2019  
through  
August 2021



# Segmented Construction

## Benefits

- Fully dedicates resources to one segment at a time
- Shortens the overall duration of work in a given area
- Community will see progress within each segment rather than experiencing work in multiple phases
- Minimizes construction traffic impacts along West Avenue as the entire street will not be an open work zone
- Local traffic will be maintained within active segment
  - General traffic will be detoured around the work

An aerial photograph of Miami Beach, Florida, showing a mix of modern high-rise apartment buildings and older, lower-rise structures. The city is situated along a large body of water, with a long pier extending into the water. In the background, several large gantry cranes are visible, suggesting a port or industrial area. The sky is clear and blue. A semi-transparent white box in the top left corner contains the text 'MIAMIBEACH RISING ABOVE' in green and blue.

MIAMIBEACH  
RISING  
ABOVE

**5** Where We Are Now

# Where We Are Now

## Ongoing Activities

- 10-year storm drainage analysis and design development
- Water and sanitary sewer design at 90% securing permits
- Master planning for utility relocations
- Roadway, lighting, landscaping concepts complete – pending City approval
- Existing tree study nearing completion by the contractor's arborist and will be coordinated with the city's Urban Forester
- Encroachment analysis and policy directives are in progress
- Harmonization plans at 60% completion – all properties
- Baywalk concepts complete – discussion with agencies and interfacing properties underway
- Lincoln Road pump station design development
- Meetings with Segment 1 and 2 building representatives



An aerial photograph of Miami Beach, Florida, showing a mix of modern high-rise apartment buildings and older, lower-rise structures. The city is situated along a large body of water, with a long pier extending into the water. In the background, several large gantry cranes are visible, suggesting a port or industrial area. The sky is clear and blue. A semi-transparent white box in the top left corner contains the text 'MIAMIBEACH RISING ABOVE' in green and blue letters.

MIAMIBEACH  
RISING  
ABOVE

**6** Questions/Comments



MIAMIBEACH  
RISING  
ABOVE

For more information please contact:  
Heather M. Leslie, Public Information Liaison  
305.905.5876  
[Heather@hmlpublicoutreach.com](mailto:Heather@hmlpublicoutreach.com)